

RESEARCH

SOURCE

MANAGE

ASSIST

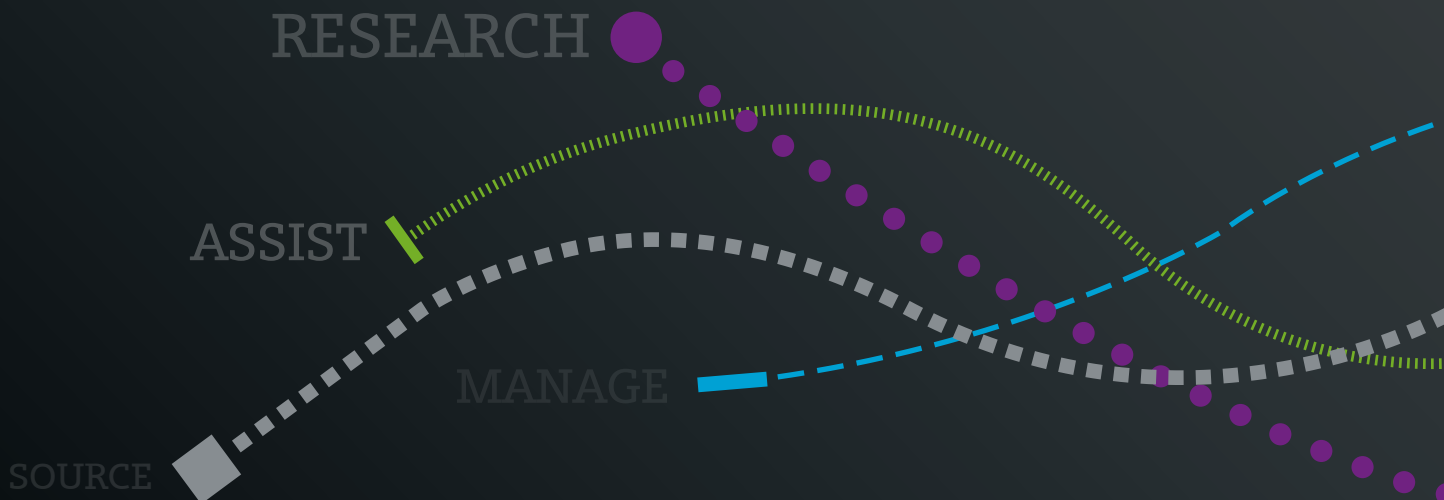
...A FUSION OF TRAVEL RESOURCE





WORLD TRAVEL

WWW.EXPOWORLDTRAVEL.COM



Expo World Travel is a specialist provider of co-ordinated travel services for businesses attending exhibitions, trade fairs, conferences, meetings and incentives worldwide. **Go further with Expo World Travel.**

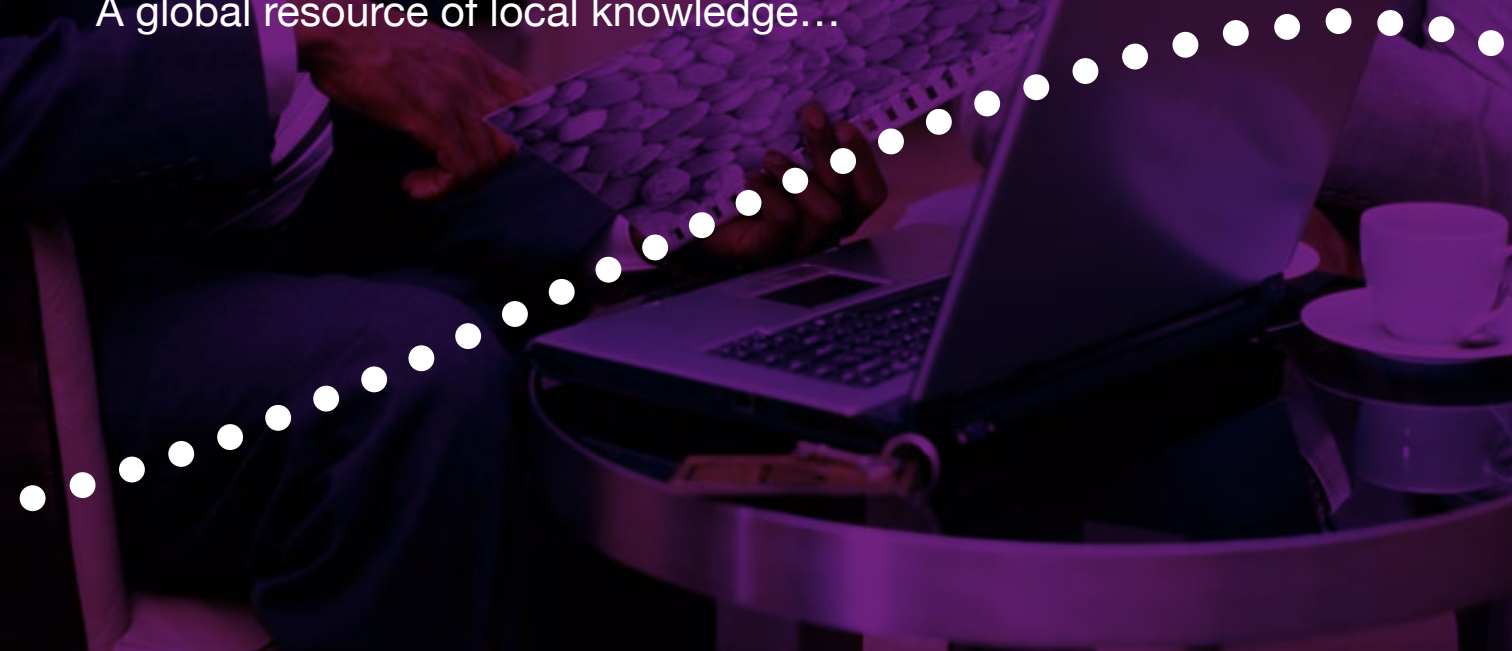
Our clients choose Expo World Travel to book and co-ordinate their hotel accommodation and travel itinerary, giving them more time to focus on their business, meet new customers and promote themselves worldwide.

Our global resource of local knowledge means we've done the **research** to find ideal accommodation that is both close to the exhibition venue and within budget. We will **source** everything for you and your team, from hotel rooms and meeting venues to hire cars and restaurants for client entertaining, all tailored for your needs. We'll **manage** your entire itinerary, co-ordinating your flights and transportation to the exhibition, ensuring that your accommodation is securely booked for you when you arrive. With a representative available on-site, you can relax in the knowledge that we're on hand to **assist** you throughout your trip.

We'll take care of your travel and accommodation, so you can take care of your business.

RESEARCH ✈️

A global resource of local knowledge...





TAILORING OUR RESEARCH TO MEET YOUR NEEDS...

We have a global resource of hotels and meeting venues, conveniently located for major exhibition and conference centres around the world with accommodation to suit all budgets. With our local knowledge, we'll **research** the ideal hotel rooms for you, your team and your customers. If you need them, we will organise meeting rooms or conference facilities and we'll even recommend restaurants for client entertaining.

You will save valuable travel time by being based locally and, with all your travel and meeting arrangements organised, you can spend more time networking, winning new business and entertaining your clients. We will make sure you're always in the **right place at the right time**.


Call us now on
+44 (0) 20 8166 5629



SOURCE



A travel itinerary tailor-made for you...

A white dotted line that starts on the left side of the frame, curves downwards and then upwards, ending on the right side, passing behind the woman's hands.



YOU JUST SIT AND RELAX WHILST WE **SOURCE** THE SOLUTION...

To help you get the most out of your trip, we take time to understand your business and get a clear picture of your objectives. We will then **source** the accommodation, flights, car hire, visa requirements and transfers for each member of your team.

Your staff may be travelling from different places and at different times. We will co-ordinate everyone's travel arrangements carefully taking into consideration your time constraints, budget limitations and each traveller's individual requirements to find the ideal base for you, whatever the size of your group.

We **tailor** each person's travel and accommodation arrangements, taking care of their particular needs such as special dietary requirements and room preferences, to ensure they arrive relaxed and ready to work. We'll make sure your customers **see the best of you.**

Call us now on
+44 (0) 20 8166 5629

MANAGE



An efficiently planned travel schedule...



WE WILL **MANAGE AND CO-ORDINATE...**

We offer a comprehensive choice of airlines and accommodation, all at competitive prices, and because we personally review every service we offer, you can be sure of consistently high standards. Our priority access to flights and hotels worldwide means we can co-ordinate complex travel itineraries with ease and, if you need to make last minute changes of schedule, we will **manage** these for you, smoothly and efficiently.

We provide you with full itineraries for each team member detailing their accommodation, flights and transfers. All they'll have to remember is their passport and suitcase! With a well-planned, co-ordinated schedule you can be sure that everyone in your team knows where they need to be and when. We'll make sure you have more **time to spend with your customers.**

Call us now on
+44 (0) 20 8166 5629

A man in a dark suit and light blue tie is smiling and looking at a computer monitor. A woman with blonde hair, wearing a light-colored button-down shirt, is sitting at the desk and looking at the same monitor. The background is a blurred office setting with a sign that partially reads "AR...". The entire image has a green color overlay.

ASSIST



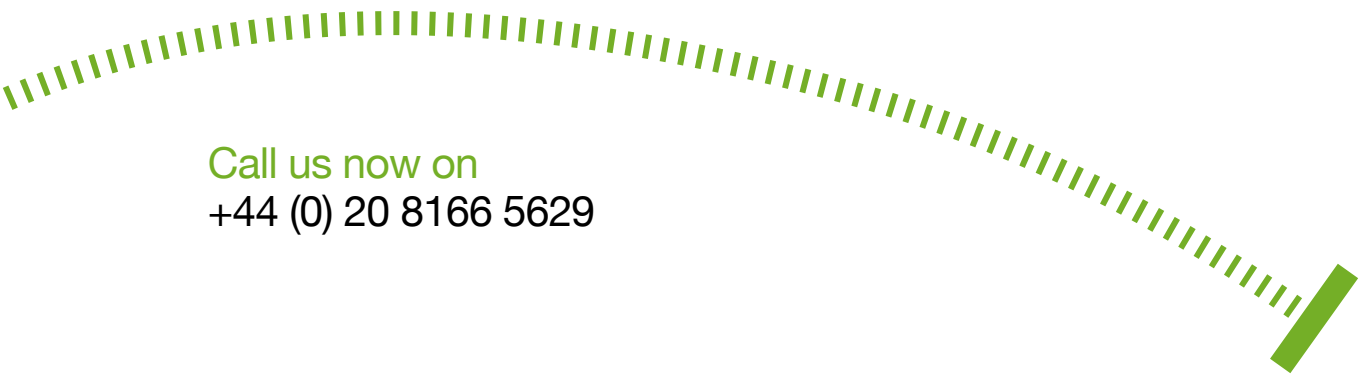
An expert assistant by your side from the beginning...



24HR TRAVEL ASSISTANCE PROVIDED AS STANDARD FOR YOU...

Our management service doesn't stop once your travel is booked. You will have access to **24 hour assistance**, both before and throughout your trip, from one of our expert representatives who will be fully briefed on your itinerary. We're by your side to provide dedicated support throughout your stay. Think of us as one of the team.

Because we're on site with you, any time you have a question regarding your travel or accommodation arrangements, we can answer it. We will manage your itinerary and continue to **support** you to make the most of your stay. So you can **focus on your business**.






Call us now on
+44 (0) 20 8166 5629



WORLD TRAVEL

CALL OUR TEAM NOW ON: +44 (0) 20 8166 5629
ALTERNATIVELY, EMAIL US ON EVENTS@EXPOWORLDTRAVEL.COM
OR VISIT OUR WEBSITE WWW.EXPOWORLDTRAVEL.COM

FOLLOW US:   

Expo World Travel Ltd
The Barn, Unit 6, Apsley Farm, Wilderwick Road,
East Grinstead, West Sussex RH19 3NT
United Kingdom | Company No: 07466180